





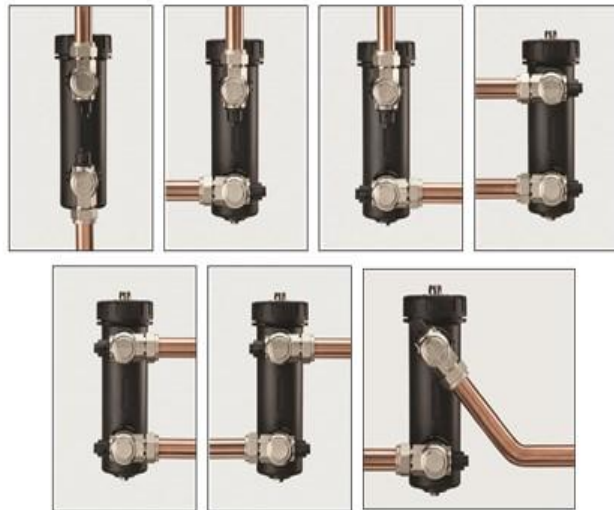


### Multiple opțiuni de instalare

Multiple installation options / Options d'installation multiples / Múltiples opciones de instalación / Varie opzioni di installazione / Meerdere installatie-opties / Vielfache Einbauoptionen

-  Design-ul special 360° îi conferă filtrului Magna Clean Professional 2XP multiple posibilități de montare atât în plan vertical, cât și orizontal.
-  *MagnaClean Professional2XPs* in-line design and 360° rotational valves provide multiple installation options for both vertical and horizontal pipework.
-  La conception en ligne et les vannes rotatives à 360° du *MagnaClean Professional2XP* permettent de multiples options d'installation sur les tuyaux verticaux et horizontaux.
-  Grazie al design in linea e alle valvole rotative a 360°, i filtri *MagnaClean Professional2XP* consentono di scegliere tra varie opzioni di installazione.
-  *MagnaClean Professional2XP* wordt in de leiding gemonteerd met 360° draaiende afsluiters en biedt zodoende meerdere installatie-opties voor zowel verticaal als horizontaal leidingwerk.
-  Durch die Auslegung zum Einbau in die Rohrleitung und die 360°-Drehventile von *MagnaClean Professional2XP* stehen vielfältige Einbauoptionen für senkrechte und waagerechte Rohrleitungen zur Verfügung.



# MagnaClean

## 2XP



**ADEY**  
PROFESSIONAL HEATING SOLUTIONS

Telephone: +44 (0)1242 546717 Email: info@adey.com  
[www.adey.com](http://www.adey.com)

 Produced from recycled material  
A carbon neutral company

M01420

**ADEY**  
PROFESSIONAL HEATING SOLUTIONS

## Instalare

### Installation / Installation / Instalación / Installazione / Installatie / Installieren



Pentru a obține o protecție eficientă a centralei, se recomandă instalarea filtrului Magna Clean Professional 2XP pe țeava de retur a instalației, după ultimul calorifer, înainte de centrala termică.



To achieve the best level of protection for the boiler, it is recommended that *MagnaClean Professional2XP* is fitted on the return of the system after the last radiator before the boiler.



Pour garantir une protection optimale de la chaudière, nous conseillons de placer le *MagnaClean Professional2XP* sur le tuyau de retour, entre la chaudière et le dernier radiateur.



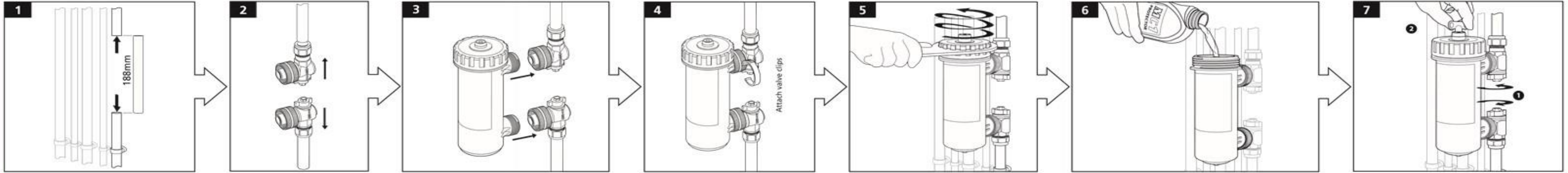
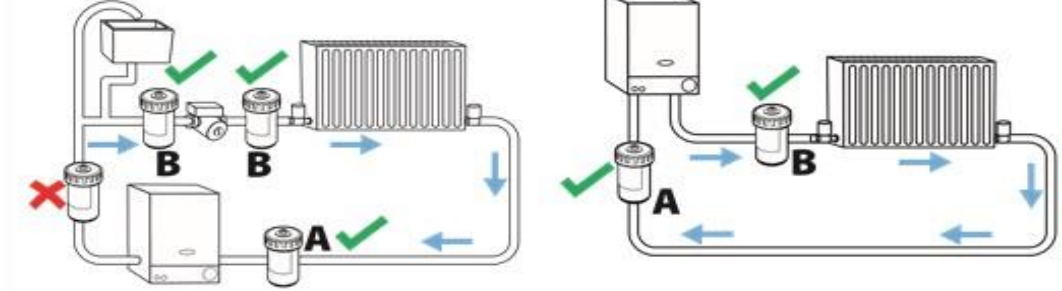
Per proteggere al meglio la caldaia, raccomandiamo di installare *MagnaClean Professional2XP* sulla linea di ritorno dell'impianto, dopo l'ultimo radiatore prima della caldaia.



Voor de beste bescherming van de boiler wordt aangeraden om *MagnaClean Professional2XP* te monteren op de retourleiding van het systeem, na de laatste radiator voor de boiler.



Zum optimalen Schutz des Heizkessels wird empfohlen, *MagnaClean Professional2XP* im Rücklauf der Anlage nach dem letzten Heizkörper und vor dem Kessel einzubauen.



### Servicing / Entretien / Mantenimiento / Manutenzione / Onderhoud / Wartung

